



Plate and slatted

Manholes

i TECHNICAL CHARACTERISTICS PLATE MANHOLES.

It is made of plate 2 mm. thickness.

Lug for padlock.

Hook to catch in work site.



∇ FINISH

Hot dipped galvanized UNE-EN ISO 1461.

i TECHNICAL CHARACTERISTICS SLATTED MANHOLES.

It is made of slatted mesh 34x38 mm. platen 50x3 mm. and round braided wire 5 mm. or slatted with fluted plate 3,5 mm.

Frame support sheet 60x40x3 mm.

Dimensions: 500x500 mm.



→ DIMENSIONS (mm)

Nominal size	Outside Size	Inside Size
300x300mm	304x304mm	246x246mm
400x400mm	404x404mm	346x346mm
500x500mm	504x504mm	446x446mm
600x600mm	602x602mm	544x544mm
700x700mm	704x704mm	644x644mm
800x800mm	803x803mm	744x744mm
900x900mm	903x903mm	844x844mm
1000x1000mm	1004x1004mm	947x947mm

Certification of conformity of Production: CPG-0000021



C/ Blanca, s/n Pol. La Polvorista
30500 Molina de Segura. Murcia



968 611 974
FAX 968 611 858



info@galsusa.es



www.galsusa.es



GALSUSA
galvanizados del sureste, s.a

Standard Gilled Pieces

Standard Pieces

→ DIMENSIONS (mm)

Meshes	Bearing Platens 25x2 mm	Interwound
30x30 mm. (34X38)	2.000x1.000 mm	Ø 4mm
	190x1.000 mm	
800x270 mm Steps to weld or screw with antislip front		

→ DIMENSIONS (mm)

Meshes	Bearing Platens 30x2 mm	Interwound
30x30 mm. (34X38)	3.000x1.000 mm	Ø 4mm
	2.000x1.000 mm	
	2.000x1.000 mm*	
	1.000x1.000 mm	
	800x1.000 mm	
	600x1.000 mm	
	500x1.000 mm	
	500x1.000 mm	
	500x1.000 mm	
	250x1.000 mm	

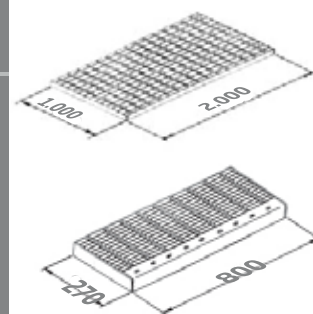
*With safety mesh

900x270 mm. Steps to weld or screw with antislip front

1000x270 mm. Steps to weld or screw with antislip front

→ DIMENSIONES (mm)

Meshes	Bearing Platens 30x3 mm	Interwound
30x30 mm. (34X38)	2.000x1.000 mm	Ø 4mm
1.000x270 mm. Steps to weld or screw with antislip front		



Certification of conformity of Production:
CPG-0000021



C/ Blanca, s/n Pol. La Polvorista
30500 Molina de Segura. Murcia



968 611 974
FAX 968 611 858



info@galsusa.es



www.galsusa.es



GALSUSA
galvanizados del sureste, s.a

Electrically-soldered Grating

Horizontal panels

⊘ DIMENSIONS FOR HORIZONTAL USE (Industrial) (mm)

Dimensions of the mesh	Thickness Rods	Platen (mm)	Aprox. Weight Kgs/m ² N/Galv.	Aprox. Weight Kgs/m ² Galva.
30x30mm (34x38)	4mm	25x2	13.50	15
		25x3	19	21.50
		30x2	15	17.50
		30x3	22	26.70
		35x3	26	29
		40x3	29	32
		50x3	38.20	41.30
30x30mm (34x38) WITH SAFETY MESH 8x8mm	4mm	30x2	22	24.70
		30x3	28	30.5

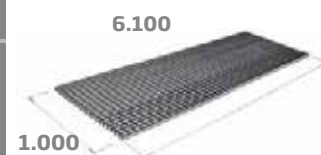
Length of panel 6.100mm; width of panel 1.000 mm



⊘ DIMENSIONS FOR VERTICAL USE (DECORATIVE) (mm)

Dimensions of the mesh	Thickness Rods	Platen (mm)	Aprox. Weight Kgs/m ² N/Galv.	Aprox. Weight Kgs/m ² Galva.
60x120mm (62x132)	4mm	25x2	7.60	8.60
60x60mm (62x66)		25x2	8.70	9.85

Length of panel 6.072mm; width of panel 1.862 mm



∇ FINISH

Hot dip galvanized UNE-EN ISO 1461, or in black.
(without galvanizing)

••• ACCESSORIES

Fastening pieces for grilles 34X38 mm mesh.
(Hot Galvanized)

Certification of conformity of Production:
CPG-0000021



C/ Blanca, s/n Pol. La Polvorista
30500 Molina de Segura. Murcia



968 611 974
FAX 968 611 858



info@galsusa.es



www.galsusa.es



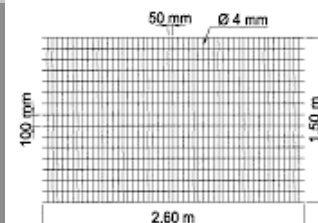
Electro-soldered slatted

Electro-soldered mesh

⊘ DIMENSIONS (mm)

Mesh Dimensions	Thick Rib	Kg/m ² Grey	Kg/m ² Pre-Galv.	Kg/m ² Hot-Dip
100x50mm	4mm	2.80	2.88	3.20

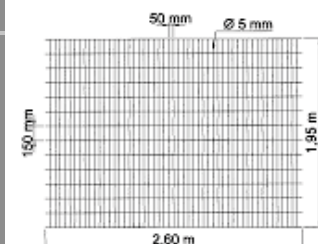
Panel 2.600mm Length; Panel 1.500 mm Height
2.000 mm



⊘ DIMENSIONS (mm)

Mesh Dimensions	Thick Rib	Kg/m ² Grey	Kg/m ² Pre-Galv.	Kg/m ²
150x50mm	5mm	3.96	4.06	4.55

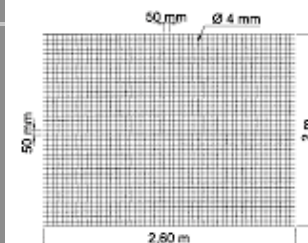
Panel 2.600mm Length; Panel 1.500 mm Height
1.950 mm



⊘ DIMENSIONS (mm)

Mesh Dimensions	Thick Rib	Kg/m ² Grey	Kg/m ² Pre-Galv.	Kg/m ² Hot-Dip
50x50mm	4-5mm	4.06	4.14	4.67
		5.48	5.60	6.00

Panel 2.600mm Length; Panel 1.500 mm Height
2.000 mm



Certification of conformity of
Production:
CPG-0000021



C/ Blanca, s/n Pol. La Polvorista
30500 Molina de Segura. Murcia



968 611 974
FAX 968 611 858



info@galsusa.es



www.galsusa.es

Electro-soldered slatted.
Finished pieces in stock

Gutters

i TECHNICAL CHARACTERISTICS

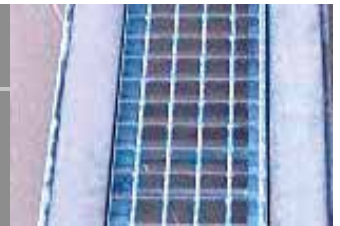
It is made of electro-soldered slatted mesh 30x30 mm. nominal 34x38 mm. to axes, round braided wire \varnothing 5mm. and platen bearing platen 25x2.

Frame to support 30 mm. in angular with hook to catch in work site.



? APPLICATIONS

It is designed to collect water and for the traffic car.

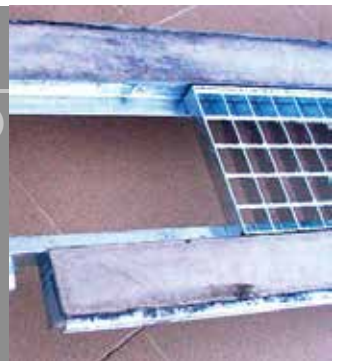


→ DIMENSIONS (mm)

The grille 30x30 25x2 is situated in sections of 1.000 mm. (direction the round) X 190 (direction the platen).

The grille 30x30 30x2 in sections of 250 (direction the platen) x 1.000 mm.

Bearing frame in L-30 mm situated in sections of 2015 and 1000 mm length x 205 mm width.



▽ FINISH

Hot dipped galvanized UNE-EN ISO 1461.

Certification of
conformity of
Production:
CPG-0000021



C/ Blanca, s/n Pol. La Polvorista
30500 Molina de Segura. Murcia



968 611 974
FAX: 968 611 858



info@galsusa.es



www.galsusa.es